

Zero



“Simplify, then add lightness”

— Colin Chapman



JP ZERO is a true car for the drivers - ultra lightweight and really fast, but also easy to handle and uncomplicated in maintenance. It is available as ZEROrace (a pure, GT2-spec race car), ZEROtrack (a super fast arrive-and-drive track-tool) or ZEROpure (a fully functional base for race- or track-day cars without bodywork).





Zero

RACE GT2

ZEROrace is a full-spec GT2 race car. It's only 960kg in weight, comes with 500-610 hp (depending on BoP) and a full carbon bodywork.



Specs ZEROrace GT2

Engine:	V6, 90° DOHC, supercharged
Displacement:	3456 cm ³
Bore x Stroke:	94,5 x 83 mm
Max. Power:	500 - 610 hp (BoP) at 6250 rpm
Max Torque:	520 - 635 Nm at 4470 rpm
Lubrication:	Dry sump
Max RPM:	7400 rpm
Engine & gearbox control:	Syvecs/Life Racing ECU

Transmission

Transmission type:	Rear-wheel drive system with mechanical limited slip differential; adjustable traction control (2x12-step – separate adjustment for spin & cut on steering wheel)
Gearbox:	6-Speed sequential gearbox

Body and chassis

Chassis:	Aluminium Space-frame Chassis with Krontec air lifting system
Body:	Carbon Kevlar Body Panels
Aerodynamics:	Adjustable carbon rear wing (swan neck)
Safety:	FIA-spec roll cage, FIA-spec carbon race seat, fire extinguishing system

Wheels

Front rims:	18" forged aluminium alloy rims with center lock; 10x18" ET45
Rear rims:	18" forged aluminium alloy rims with center lock; 12x18" ET 37
Front tires:	265/645-18 DHE (Pirelli or Michelin)
Rear tires:	315/680-18 DHE (Pirelli or Michelin)

Braking system, steering and dampers

Front brakes:	Steel discs AP Racing 378x32 mm, AP Racing 6-Piston-Monoblock calipers, additional cooling for Pistons and calipers
Rear brakes:	Steel discs AP Racing 356x28 mm, AP Racing 4-Piston-monoblock calipers, additional cooling for Pistons and calipers
ABS:	Bosch Motorsport M5, 12-step, adjustable from steering wheel
Steering:	Steering rack without servo assistance
Dampers:	KW Competition dampers 3-way or 4-way
Anti-roll bar:	9-way blade adjustable (front and rear)

Dimensions

Length:	4335 mm
Width:	2001 mm
Wheelbase:	2460 mm
Weight:	Dry weight (incl. all liquids without fuel) 960 kg
Fuel Tank:	70 litre, FT3-Standard

Electronics

Motec Display for driver information and diagnostics for service crew
Motec datalogger with i2 Data Analysis
Suede covered steering wheel with Krontec center lock and carbon shifting paddles
ABS und traction control adjustable on steering wheel
Syvecs/Life Racing PDU module
Motec PDU Keypad

Options

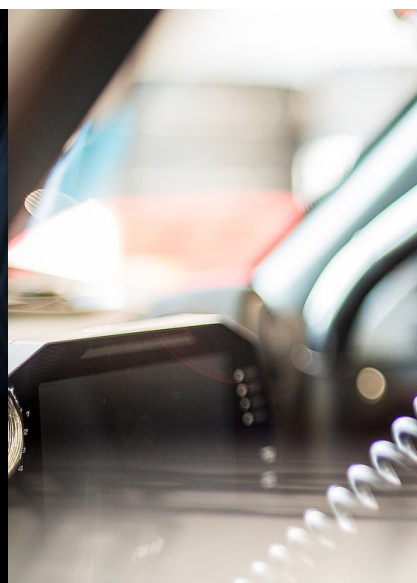
Vbox Video System
Arm nets left and right
Air condition
Drinking system for driver
Telemetry Motec T2
Linear suspension sensors
Steering wheel adjustable (length, height)
Pedalbox adjustable
Rear-view-camera
Additional display (Motec)
etc.





Zero **track**

ZEROtrack was designed as an ultimate arrive-and-drive track-tool. Arrive on track, jump in and have fun - without the pain of heavy maintenance effort.



Specs ZEROtrack

Engine:	V6, 90° DOHC, supercharged
Displacement:	3456 cm ³
Bore x Stroke:	94,5 x 83 mm
Max. Power:	500 or 550 or 600 hp at 6250 rpm
Max Torque:	520 - 610 Nm at 4470 rpm
Lubrication:	Dry sump
Max RPM:	7400 rpm
Engine & gearbox control:	Syvecs/Life Racing ECU

Transmission

Transmission type:	Rear-wheel drive system with mechanical limited slip differential; adjustable traction control (2x12-step – separate adjustment for spin & cut on steering wheel)
Gearbox:	7-Speed Dual Clutch System or 7-Speed Manual or 6-Speed Sequential

Body and chassis

Chassis:	Aluminium Space-frame Chassis
Body:	Carbon Kevlar Body Panels
Aerodynamics:	Adjustable carbon rear wing (swan neck)
Safety:	FIA-spec roll cage, FIA-spec carbon race seat

Wheels

Front rims:	18" forged aluminium alloy rims; 10x18"
Rear rims:	18" forged aluminium alloy rims; 12x18"
Front tires:	Pirelli PZero 265/645-18 DHE or Pirelli Trofeo 265/35-18
Rear tires:	Pirelli PZero 315/680-18 DHE or Pirelli Trofeo R 325/30-18

Braking system, steering and dampers

Front brakes:	Steel discs AP Racing 378x32 mm, AP Racing 6-Piston-Monoblock calipers, additional cooling for Pistons and calipers
Rear brakes:	Steel discs AP Racing 356x28 mm, AP Racing 4-Piston-monoblock calipers, additional cooling for Pistons and calipers
ABS:	Bosch Motorsport M5, 12-step, adjustable from steering wheel
Steering:	Steering rack without servo assistance
Dampers:	KW Competition dampers 3-way or 4-way
Anti-roll bar:	9-way blade adjustable (front and rear)

Dimensions

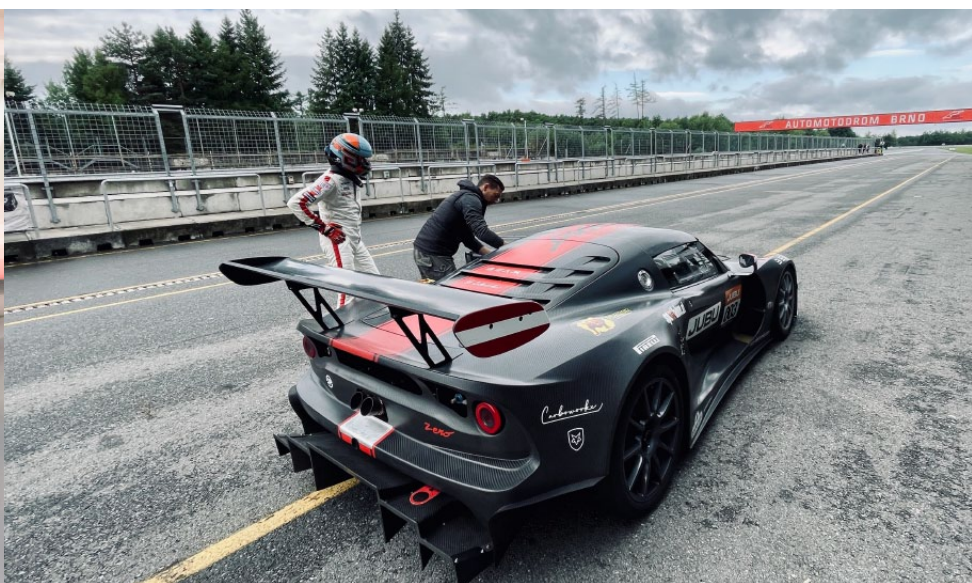
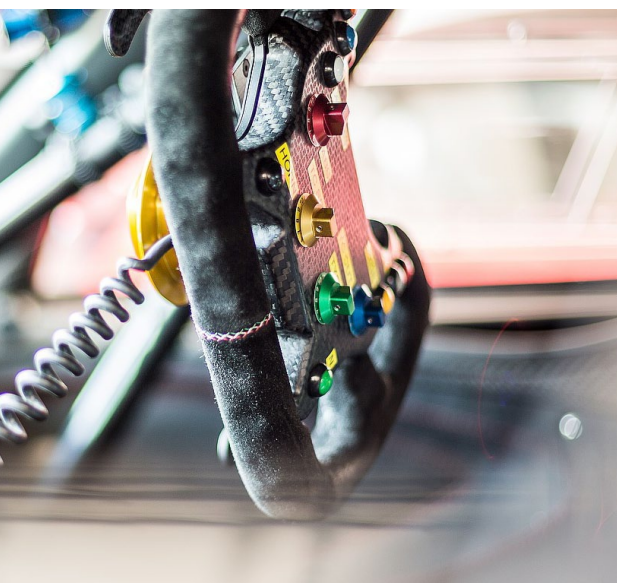
Length:	4335 mm
Width:	2001 mm
Wheelbase:	2460 mm
Weight:	Dry weight (incl. all liquids without fuel) 960 kg
Fuel Tank:	70 litre, FT3-Standard

Electronics

Motec Display for driver information and diagnostics for service crew
Motec datalogger with i2 Data Analysis
Suede covered steering wheel with Krontec center lock and carbon shifting paddles
ABS und traction control adjustable on steering wheel
Syvecs/Life Racing PDU module
Motec PDU Keypad

Options

Vbox Video System
Arm nets left and right
Air condition
Drinking system for driver
Telemetry Motec T2
Linear suspension sensors
Steering wheel adjustable (length, height)
Pedalbox adjustable
Rear-view-camera
Additional display (Motec)
Passenger seat
etc.



zero fear.
zero compromise.
zero cars ahead.

information and enquiries:



jp-zero.eu



JP ZERO is a product and brand of JUBU Performance GmbH, Saxenegg 3a, 4323 Münzbach, Austria

+43 7264 20175 | info@jubu-performance.com | www.jubu-performance.com